



## T40140 | Telescopic Handlers



## Performance

Lifting height — on stabilisers	13610.0 mm
Lifting height — on tyres	13430.0 mm
Rated capacity	4000 kg
Capacity (at max. height — on stabilisers)	4000 kg
Capacity (at max. height — on tyres)	2500 kg
Capacity (at max. reach — on stabilisers)	1300 kg
Capacity (at max. reach — on tyres)	250 kg
Max. reach on stabilisers	9700.0 mm
Max. reach on tyres	9800.0 mm
Crowding force	5000 daN

## Weights

Weight (unladen)	10000 kg
------------------	----------

## Traction

Standard tyres	400/80x24
Low speed (forward/reverse)	8.0 km/h
High speed (forward/reverse)	30.0 km/h
Driving modes	Direct drive / soft drive

## Drive System

Main drive	2-speed hydrostatic motor
Transmission	Hydrostatic with electronic regulation

## Engine

Make / Model	PERKINS / 1104D-44TA turbo
Fuel	Diesel
Cooling	Liquid
Rated power (DIN 6271) at 2200 RPM	74.5 kW
Maximum torque at 1400 RPM	410.0 Nm
Number of cylinders	4
Displacement	4.40 L

## Hydraulic System

Pump type	Gear pump with LS valve
Combined pump capacity	135.00 L/min
Working pressure	250.00 bar

## Cycle Times

Lift time — no load	13.0 s
Lower time — no load	7.2 s
Telescope in time at max. reach — no load	12.4 s
Telescope in time at max. height — no load	11.0 s
Telescope out time at max. reach — no load	19.3 s
Telescope out time at max. height — no load	19.2 s

## Brakes

Engine braking	Hydrostatic
Parking and emergency brake	Negative brake with hydraulic command

## Fluid Capacities

Axles and reduction gears front / rear	11.9/11.4 L
Engine oil	8.50 L
Fuel tank	140.00 L
Hydraulic reservoir	77.00 L

## Standard Features

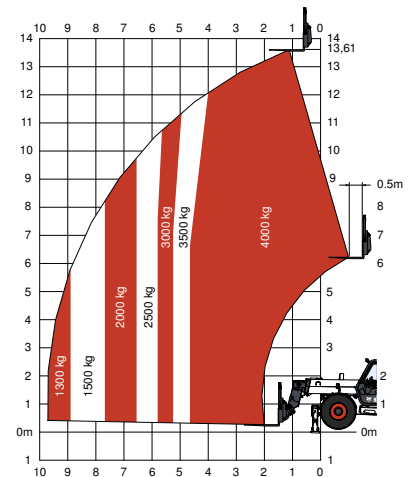
Aggravating Movements Arrester (AMA)	Right and left side mirrors
Hydrostatic transmission	Two way hydraulic supply at the end of the boom
ROPS/FOPS operator cab	Mudguards
Heating, demisting and ventilation	Turbo-charged engine
Front and rear washer/wipers	Narrow hook-up for mounting of the equipment
Suspension seat	Mechanical lock of the equipment
Road lights	Four 400/80x24 tyres
Turn signals	

## Options

Back up alarm	Carriage with hydraulic attachment lock
Second hydraulic function on boom	Yoke and electrical plug
Air conditioning	Roof window wiper
Man platform predisposition	Windscreen grill
Rotating beacon	Radio remote control

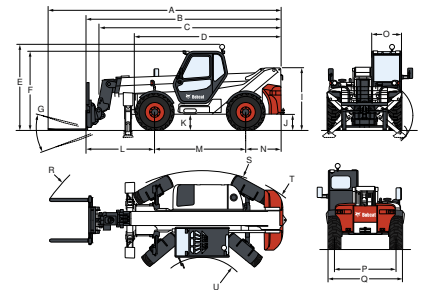
## Load Charts

With forks and standard 400/80x24 tyres or DUNLOP 400/80x24 156B T37 TL tyres, on stabilisers



Complies with stability test EN1459 Annex B

## Dimensions



(-) 1804.0 mm	(F) 2473.0 mm
(-) 920.0 mm	(G) 125°
(-) 1200.0 mm	(J) 503.0 mm
(-) 2475.0 mm	(M) 2850.0 mm
(-) 15°	(O) 930.0 mm
(-) 110°	(P) 1992.0 mm
(A) 7304.0 mm	(Q) 2394.0 mm
(B) 6099.0 mm	(R) 5748.0 mm
(D) 4589.0 mm	(S) 4260.0 mm
(E) 2701.0 mm	(U) 1560.0 mm

Specifications and design are subject to change without notice. Pictures of Bobcat products may show other than standard equipment.



[www.bobcat.eu](http://www.bobcat.eu)