



Bobcat®

Toolcat™ Utility Work Machines



One Tough Animal™



PICKUP TRUCK

Get there in a pickup... or get there AND get the job done with the Toolcat™ utility work machine. A pickup can transport passengers, haul cargo and tow a trailer. The Toolcat 5600 does that and more. With towing and cargo box capacities comparable to most ½ ton pickups, a hydraulic dump cargo box for easy unloading and a lift arm that utilizes more than 40 easy-to-change attachments, your machine does the work – not you.

COMPACT TRACTOR

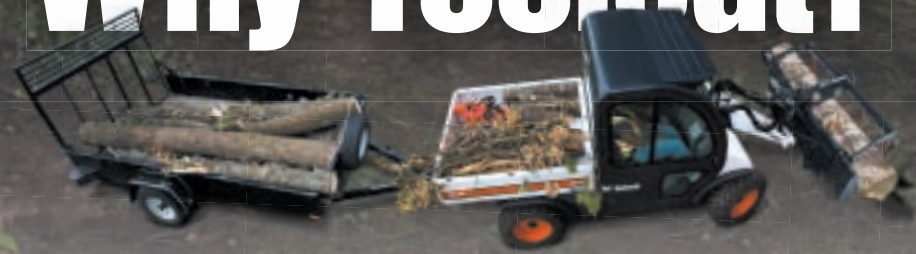
A compact tractor and a Toolcat utility work machine can both get the job done, but only one can bring everything you need for the job. Toolcat utility work machines can bring a coworker, tools and supplies to the jobsite and operate more than 40 front-mounted attachments. The 5610 can also be equipped with optional 3-point hitch, PTO and/or rear-remote hydraulics to operate all of your category 1 implements. Plus, both the 5610 and 5600 have a top speed of 18 mph and four-wheel independent suspension that provides a comfortable ride while increasing traction.

SKID-STEER LOADER

A skid-steer loader, with its numerous attachments and compact size, can do hundreds of jobs. Versatile as it is, it still can't haul material, tow a trailer or carry a passenger. With dozens of interchangeable attachments and great maneuverability, the Toolcat utility work machines have two of the best features of a skid-steer, plus room for a passenger, towing capabilities, and a top travel speed of 18 mph to get you to and from your job faster.



Why Toolcat?



UTILITY VEHICLE

A utility vehicle is a maneuverable way to get a coworker, materials and supplies around the jobsite. They typically have around a 1,000 lb. payload capacity and a 1,300 lb. towing capacity – great for a vehicle. But when a machine is what you need, the Toolcat utility work machine's 4,000 lb. towing capacity, a lift arm for loading material and running dozens of attachments and a 2,000 lb. cargo box capacity on the 5600 will take your production to the next level and then some.

When you've got plenty to do, versatility is essential. Why slow down to start up another machine? Why take up valuable space with equipment that only gets used occasionally? Why deal with the extra maintenance and costs of multiple machines if you only need one?

The Toolcat utility work machine does many of the jobs you'd do with a pickup truck, compact tractor, utility vehicle or an attachment carrier, plus a whole lot more. Add the precise maneuverability of its all-wheel steer, and you have the most versatile worker in your fleet or on your estate.

Any Day. Any Job.

Why waste time and money on several machines, each dedicated to only one task, when you don't have to? Maximize your production and return on investment by connecting your Toolcat™ utility work machine to one of more than 40 front-mounted attachments. Changes take less than a minute – so it's simple to mow in the morning, remove downed trees in the afternoon and dig post holes in the evening. It's an investment you can leverage a different way every day, all year round.

Want to make sure you get the most out of your machine? Purchase the attachments you regularly use, like a mower, so they're there when you need them. For one-time projects, rent the attachments you need, like a stump grinder, from your local Bobcat dealer.

Attachment performance is determined by more than a quick connection. The Toolcat utility work machines have additional features not found in other types of equipment that help increase attachment productivity—to get the job

done faster and easier, save valuable time and allow you to get more done in a day. Features such as:

- Lift arm float
- Horsepower management
- Hydrostatic drive
- Variable flow hydraulics
- Fingertip auxiliary control
- Work mode
- Dual direction detent
- Cruise control
- High-flow hydraulics
- Attachment control kit

*Want to learn more about these features?
Visit www.bobcat.com/toolcatattachments*





Joystick and Attachment Control Kit
The ultimate balance of control and simplicity:

Command the attachment and make on-the-fly adjustments with a simple-to-operate

joystick and effortless fingertip auxiliary control. Secondary attachment functions, like angle adjustments on the broom, blade or soil conditioner, are at your fingertips with the optional attachment control kit.



Pressure Relief Quick Couplers Clean, quick attachment changes

time after time: This unique design releases trapped line pressure and provides easier hydraulic attachment hookup.



Optional High-Flow Hydraulics

Need more attachment power? High flow provides additional hydraulic power for maximum performance during tough jobs. Use it with attachments like the Bobcat® snowblower to throw snow farther and higher and the stump grinder to grind stumps faster.

Prove yourself on the job with these Bobcat attachments:

- | | |
|-------------------------|-----------------------|
| Angle Broom | Scraper |
| Auger | Seeder |
| Bale Fork | Snow Blade |
| Box Blade | Snow Pusher |
| Box Scraper | Snow V-Blade |
| Bucket | Snowblower |
| Brushcat™ Rotary Cutter | Sod Layer |
| Chipper | Soil Conditioner |
| Combination Bucket | Soil Cultivator |
| Dozer Blade | Sprayer |
| Dumping Hopper | Stump Grinder |
| Flail Cutter | Sweeper |
| General Purpose Grapple | 3-Point Hitch Adapter |
| Grader | Tiller |
| Landplane | Tilt-Tatch |
| Landscape Rake | Trencher |
| Mower | Utility Fork |
| Pallet Fork, Std. | Utility Grapple |
| Pallet Fork, Hyd. | Water Kit |
| Sand/Salt Spreader | Whisker Push Broom |



One person can change attachments in less than a minute. With the standard Bob-Tach™ Attachment Mounting system attachment hookup is quick and easy.



With the optional Power Bob-Tach™ system, you can change non-hydraulic attachments without leaving the comfort of your cab. Just line up the attachment and flip the switch.



Heads or Tails

Revolutionize your attachment capabilities with the Toolcat™ 5610 utility work machine. With the ability to use front-mounted attachments and rear-mounted implements, buildings and grounds crews, landscapers, agriculture producers, property owners and others can reduce the time spent stopping to change attachments and get more done in less time.

* 1,500-pound ROC if machine is equipped with 3-point.

Like the 5600, the Toolcat 5610 is also a compact loader and attachment carrier, with a front lift arm that has a rated operating capacity (ROC) of 1,500 pounds.* To increase productivity you can add the available 3-point hitch and PTO, and buy, rent or use existing Category 1, 3-point implements up to 1,775 pounds to do hundreds of different tasks. Add optional rear remote hydraulics to adjust and control individual implement functions.



Check out more features of the Toolcat 5610 and at www.bobcat.com/5610tc



The Plot Thickens

With the right combination of attachments and implements, you can complete a single job – like preparing a food plot – in just a single afternoon. Mount a grapple up front and add a rotary cutter or tine rake to the rear – and clear your plot site from the front and behind. When you're ready to break ground, amend soil with fertilizer or manure and prepare for planting, switch to a front-mounted tiller or a 3-point hitch tiller. Attach a seeder to finish the job. The only reason to leave the controls of your Toolcat 5610 is to switch your attachments.





How cool is this?

The new, raised cooling package in the 5610 protects the life of your machine components and allows you to run longer and more efficiently. For mowing, the Toolcat 5610's raised cooling really shines. With cooling components located up and away from the mower discharge, you can work longer without stopping to clean the radiator.



Ultimate Versatility

What kind of work do you need to do? Only the Toolcat™ 5610, provides the ability to add or subtract key options – so you get the right machine for the type of work you do. Many standard features offer you additional flexibility for the work you do. Two cargo bins accommodate tools and supplies for the job – up to 50 pounds each. A standard 2-inch receiver hitch allows for a wide variety of towing and transport possibilities. And the raised cooling package increases your cooling efficiency. Plus, the 5610 has all of the front-mounted attachment capabilities and the same comfortable cab as the Toolcat 5600.

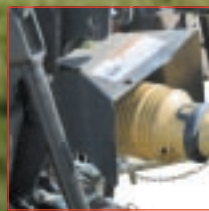
If you want to increase your capabilities, the 5610 offers three optional rear-mounted kits that will help you utilize 3-point hitch implements and increase versatility. With the right combinations of complementary attachments and implements, you can switch instantly from one job to the next – or complete two tasks in one pass.

Available Bobcat implements include:

| | |
|---------------------|-----------------------|
| 3 pt. Angle Blade | 3 pt. Seeder |
| 3 pt. Auger | 3 pt. Snowblower |
| 3 pt. Box Blade | 3 pt. Soil Cultivator |
| 3 pt. Finish Mower | 3 pt. Tiller |
| 3 pt. Rotary Cutter | 3 pt. Tine Rake |



Use attachments AND implements. Add the optional 3-point hitch to your Toolcat 5610 to hook up any of your Category 1 implements and maintain the ability to carry front-mounted attachments on the Toolcat lift arm.



Use powered implements with optional PTO. The 5610's optional PTO is simply activated with a switch in the cab, and it powers your rear-mounted, PTO-powered implements: mowers, snowblowers, augers, tillers and more.



Simple, in-cab activation and controls. You control the PTO and rear remote hydraulics with easy-to-reach, easy-to-use, cab-mounted switches. Raise and lower the 3-point hitch with a simple in-cab lever – also right in the cab for easy operation.



The 3-point hitch depth indicator helps you easily position the implement for the best possible performance. If uneven terrain threatens to slow down your work, the mechanical

float feature maintains constant contact with the ground for reliable implement performance when traveling across bumps and dips.



Gain more control with rear remote hydraulics. Gain accuracy and speed when mowing, moving snow, dumping materials and more. Whether you need to adjust a snowblower chute or lift and lower a mower deck, you control up to two hydraulic implement functions with optional rear remote hydraulics.



Ensure productive implement performance. Continuously monitor the rpm of the PTO from the cab, and operate your implement for maximum production and efficiency, with the easy-to-see, easy-to-read cab-mounted gauge.

Want to learn more about the Toolcat 5610 and its vast range of capabilities? Visit www.bobcat.com/5610tc

Four-Wheel Independent

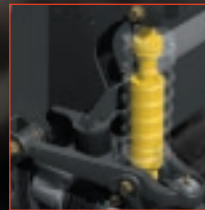
The Toolcat™ utility work machines are the first loaders to offer four-wheel independent suspension. Each wheel travels up and down independently, isolating the frame from changes in the terrain. This keeps the wheels in contact with the ground over bumps and through dips to increase traction. Compare a Toolcat machine to a tractor, other types of loaders and even utility



A-Frame control arms allow each wheel to travel up and down independently of each other and the frame – isolating the machine from changes in the terrain to improve ride and attachment performance.



Suspension Coil
A coil spring at each wheel compresses and expands to help absorb and control up-and-down movement and maximize wheel to ground contact and traction.



Shock Front and rear shocks absorb vibrations and help provide a smooth, comfortable ride.

Suspension

vehicles. One of the first things you'll notice is the increase in comfort. It is hard to believe that a tough Toolcat work machine can deliver such a smooth ride. But four-wheel independent suspension doesn't just offer a great ride. With the Toolcat suspension, you can travel at higher speeds in greater comfort – and get the job done faster!

Operator Comfort

- Independent suspension absorbs changes in terrain providing a more comfortable ride
- Increased wheel-to-ground contact reduces bounce and vibration
- Long wheelbase lessens the impact of bumps and dips and evenly distributes the weight of the machine

Better Attachment Performance

- Frame is isolated from the wheels, lessening movement of the attachment in bumpy terrain
- Applications that demand steady contact with the ground, such as mowing and snow removal, are more productive
- Reduces spillage and vibration when carrying materials

Superior Lifting and Carrying

When maximum lift or payload capacity is reached – suspension stops provide the support needed in the front and rear of the machine to deliver the lift-and-carry performance expected.



When traveling to and from your jobsite or around your ranch, the four-wheel independent suspension provides a comfortable ride – even at the top speed of 18 mph.

Want to learn more about the Toolcat suspension? Visit www.bobcat.com/toolcatindependentsuspension



Suspension Stop

Rubber stops provide support at maximum lift or payload capacity.

Maximum Traction. Minimal



Snow, ice, loose gravel or dirt... bring 'em on. They can't slow you down in the Toolcat™ utility work machine. Bobcat's one-of-a-kind drive train includes four-wheel drive, horsepower management and hydrostatic traction control – so you never have to back down when the road gets rough.

Dramatically reduce ground disturbance. Not only does Hydrostatic Traction Control optimize tractive effort, it also provides the confidence to maneuver on turf. Traditional off-road, full-time four-wheel drive systems utilize locking differentials which cause “binding” when turning. This negative feedback increases turf damage. HTC eliminates this four-wheel drive characteristic from the Toolcat drive train, minimizing turf tear out when working on grass. Together with four wheel drive and all-wheel steering, the Toolcat drive train provides the perfect balance of excellent traction, smooth turning, minimized tire wear and outstanding turf-protection.

That's not all. There are plenty of other features that bring you increased traction, control and ease of operation:

- Hydrostatic drive
- Hydrostatic braking system
- Cruise control
- Shift-on-the-fly two speed

*Want to learn more about these features?
Visit www.bobcat.com/toolcatdrivetrain*



Hydrostatic Traction Control works in conjunction with 4WD and all-wheel steer, minimizing turf damage or loss of traction in soft ground conditions.

Disturbance.

Maximize traction with Hydrostatic Traction Control (HTC). The first of the many Bobcat innovations in the D-Series Toolcat utility work machines is our exclusive four-wheel drive system. Utilizing limited slip differentials in both the front and the rear, the Toolcat HTC system automatically manages the torque split between the high-traction and low-traction tires. If one wheel loses tractive effort, HTC ensures the wheel with the most traction receives the most torque – without the need to engage any locks, buttons or levers.

Power through your toughest jobs with Horsepower Management. During an uphill climb, or when you dig into a pile, Bobcat® Horsepower Management automatically increases and decreases pressure in the hydrostatic transmission to sustain engine rpm and maintain optimum attachment performance.



Toolcat HTC ensures the wheel with the most traction receives the most torque – without the need to engage any locks, buttons or levers.

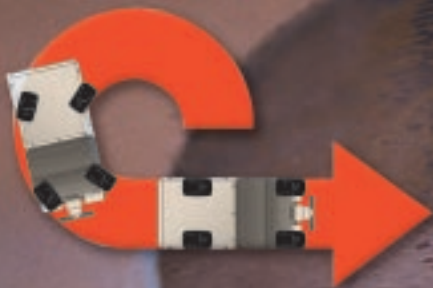
Precise Maneuverability

The tighter the area a machine can work in, the less hand labor you have to do. Precise, responsive all-wheel steering makes the Toolcat™ utility work machines extremely maneuverable and easy on turf. And with its hydraulic power steering, you have nearly effortless control.

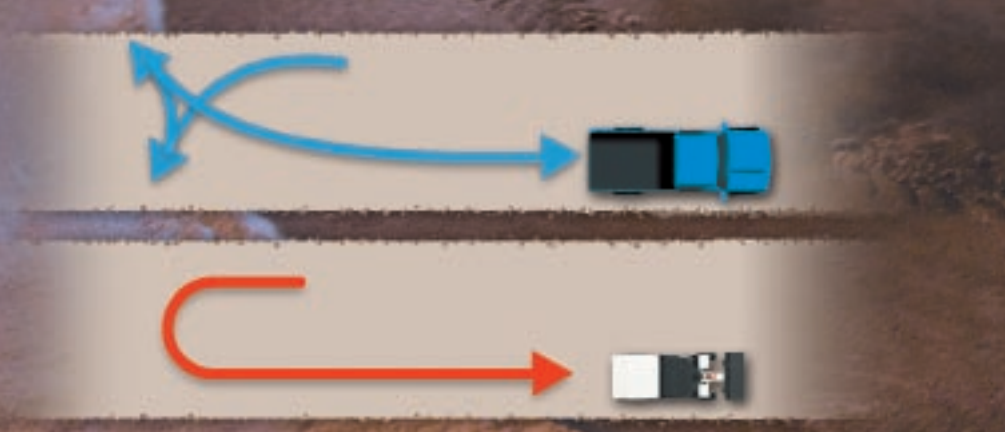
Front-wheel steer vehicles and equipment are limited in confined areas such as backyards, between buildings or around trees because of their large turning radius. They have to back up, often several times, to change direction or make the turn. Plus, the rear wheels skid through a tight turn and damage lawns or leave marks on driveways. This is even true of zero-turn mowers. With a Toolcat work machine, you can mow around trees, push snow around tight corners, maneuver through horse corrals and barn stalls, and turn in tight spaces without having to back up.

Reduce ground disturbance with all-wheel steer. With some machines, you have to sacrifice ground disturbance to get tight-turning maneuverability. Each wheel of the Toolcat utility work machine moves separately through the turning arc and rolls smoothly through the turn. That means you won't have to spend time re-installing sod or planting grass after the job is done. Different tire options also offer increased ground protection with the right balance of traction. Using all-wheel steer is not recommended when operating 3-point implements on the 5610.

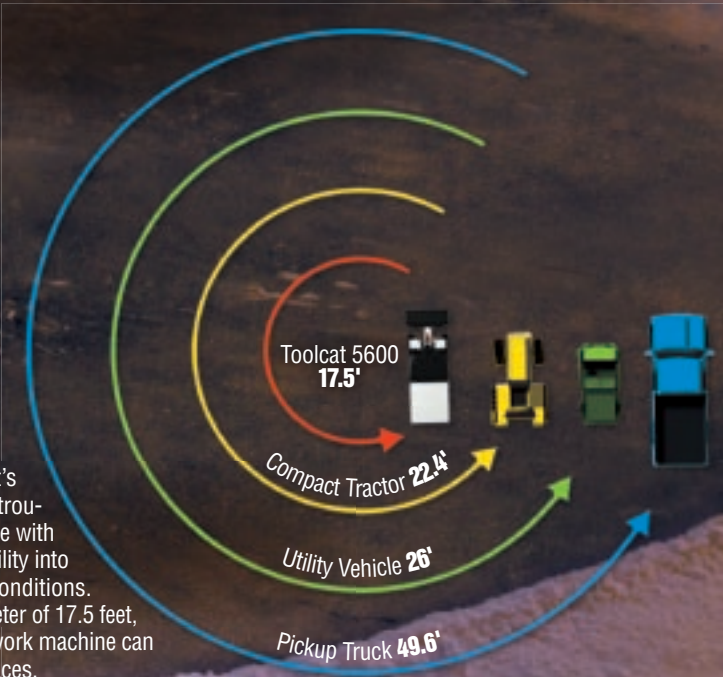
Switch to front-wheel steer whenever you need it. With the Toolcat utility work machine, you get the best of both worlds. Just switch from all-wheel steer to front-wheel steer from the operator's seat for loading onto a trailer or traveling longer distances in either model – or when engaging implements in the 5610.



Each wheel of the Toolcat™ utility work machine moves separately through the turning arc and rolls smoothly through the turn.



Turn around in smaller spaces without backing up to save time and reduce damage to grass and marks on pavement.



Even when it fits, it's often not worth the trouble to take a machine with limited maneuverability into confined working conditions. With a turning diameter of 17.5 feet, the Toolcat™ utility work machine can do more in tight spaces.



Want to learn more about Toolcat maneuverability? Visit www.bobcat.com/toolcataws

Comfort Cab

Even people without equipment experience are surprised to see how easy our equipment is to operate. With automotive-style controls and an optional heated, air-conditioned cab, the Toolcat™ utility work machines have the fit, finish and comfort of an automobile.

Bobcat looks at comfort and ease-of-use from your point of view and builds

machines accordingly. The panoramic cab offers a clear view of your attachments and surroundings. Everything you need to operate is cleanly laid out, within easy reach, and most importantly, simple to operate. The Toolcat utility work machine's simple, responsive joystick provides hassle-free attachment control. A simple switch or lever activates most features.



The wide, low door opening allows you to easily step in and out of the machine.



Our ergonomic joystick provides effortless, intuitive fingertip control of your lift arm and attachment.



Enclosed Cab With Heat/Air Conditioning

Optional fully enclosed cab with heat and air conditioning keeps you comfortable during high heat or bitter cold. The cab air filter provides cleaner air for comfortable operation.

Radio/CD Player

Take your favorite music and radio programming with you on the job.



Hydraulic Dump Cargo Box

With the 5600's standard hydraulic dump cargo box, you can quickly unload brush and debris without even leaving the cab.





Comfortable working conditions can make operators more productive. The Toolcat utility work machines have an array of features that make your time in the cab more enjoyable. *Want to learn more about the Toolcat comfort cab and see a 360-degree view of the cab? Visit www.bobcat.com/toolcatcomfortcab*



Shuttle Shift

Shuttle shift makes changing travel directions a simple task: just forward and reverse; that's it!



Cruise Control

Cruise control reduces fatigue during long operation and improves efficiency when spraying weeds or spreading salt/sand. In cruise control, you can speed up or slow down with the push of a button.



In-Cab 3-Point Hitch Control

The 3-point PTO and rear remote hydraulics are controlled with levers mounted on the consol. A smooth, easy-to-reach lever in the cab raises and lowers the 3-point hitch on the 5610 and operates the hydraulic dump box on the 5600.



Under the cargo box:

- A** Air cleaner
- B** Radiator
- C** Quick release radiator screen
- D** Battery
- E** Air conditioner condenser
- F** Coolant reservoir
- G** Windshield washer fluid reservoir
- H** Hydraulic oil fill
- I** Hydraulic oil sight gauge
- J** Hydraulic oil filters
- K** Air filter sight gauge



5610 Raised Cooling

The Toolcat 5610 features a raised cooling package that takes in cool, clean air from up above the machine – and is located further away from dust and dirt below the machine. Perfect for high-debris applications like mowing, raised cooling protects your machine and allows you to run longer between cleanings.



Keyless Start

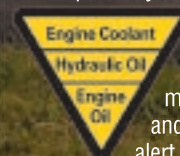
Stop searching for missing keys and reduce the risk of theft or unauthorized use with optional keyless start.

Battery Rundown Protection

Lights automatically shut off to prevent accidental battery discharge.

Machine Shutdown Protection Feature

To protect your investment, the majority of Bobcat equipment comes standard with automatic shutdown that monitors the machine's engine parameters and hydraulic functions. It will alert the operator and actually shut the machine down – lessening the chance of damage to the engine or hydraulic components.



More Uptime. Less Upkeep.

Thousands of people use Bobcat® equipment to make their living and build their reputations. These customers expect performance – day after day in the toughest working conditions – with minimal interruptions. Compact equipment has to be tougher, stronger and easier to maintain than other vehicles. Why? Because when you're not working, you're not making money.

The Toolcat™ utility work machines are engineered to meet the same standards as the rest of the Bobcat equipment lineup. Many of its components—such as the engine and cooling system—are the same as those found in our legendary loaders and excavators. These components are rigorously tested in

a wide range of applications, including construction, agriculture, military and more.

Bobcat designs the durable Toolcat machines – both the 5600 and 5610 – with maintenance points that are easy to find and reach, because when upkeep is quick and easy, maintenance is more likely to get done. That means you'll get peak performance day in and day out for years to come.

*Want to learn more about these features?
Visit www.bobcat.com/toolcatmaintenance*

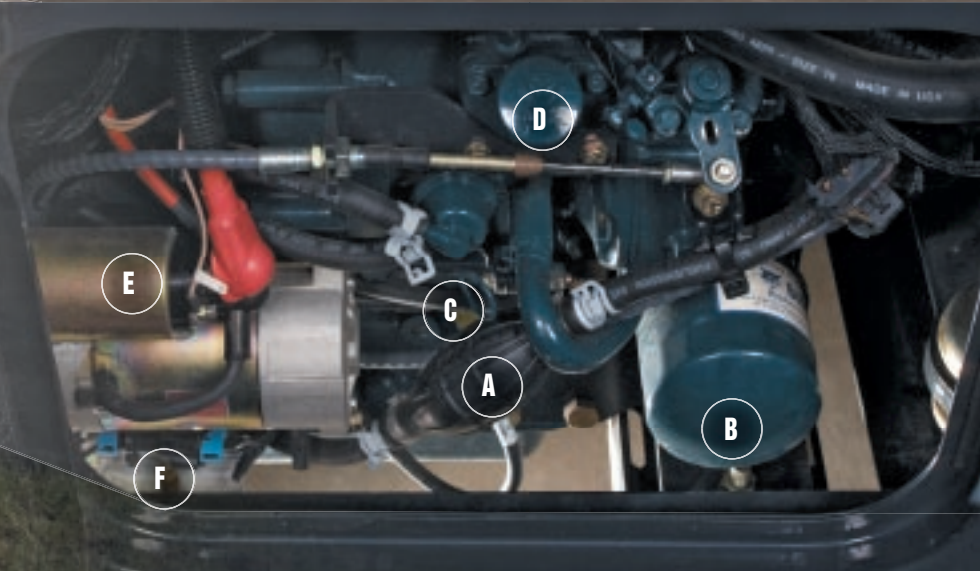


Behind the side access panel:

- | | |
|------------------------------|--------------------------|
| A Fuel primer | D Engine oil fill |
| B Engine oil filter | E Starter |
| C Engine oil dipstick | F Fuel filter |

Rigid Spine Frame

The innovative spine frame – the foundation of our engineering design – tackles the toughest jobs without twisting and provides excellent balance when lifting, digging, pushing heavy snow and traveling on uneven ground. Its design protects components from dirt, debris and foreign objects, as well as delivers easy access to routine maintenance items.



Specifications

Toolcat™ Utility Work Machine



| Model | 5600 | 5610 |
|---|---------------------------|---------------------------|
| PERFORMANCE | | |
| Rated Lift Capacity (lift arm) | 1500 lb. (679 kg) | 1500 lb. (679 kg)* |
| Cargo Box Capacity | 2000 lb. (905.3 kg) | – |
| Towing Capacity | 4000 lb. (1810.7 kg) | 4000 lb. (1810.7 kg) |
| 3-Point Hitch Capacity (24 in. Behind Lift Points) | – | 1775 lb. (805 kg) |
| PTO Horsepower | – | 25 hp (18.6 kW) |
| Storage Bin Capacity (Each) | – | 50 lb. (22 kg) |
| Machine Rated Capacity (combined weight of load on lift arm, cargo box load, operator and passenger) | 2200 lb. (996 kg) | 2200 lb. (996 kg) |
| Total Rated Capacity (combined weight of load on lift arm, cargo box load, operator and passenger, and tow weight if equipped with a hitch) | 4200 lb. (1901 kg) | 4200 lb. (1901 kg) |
| Travel Speeds | | |
| Low range | 0-8.5 mph (0-14.2 km/hr.) | 0-8.5 mph (0-14.2 km/hr.) |
| High range | 0-17 mph (0-28.3 km/hr.) | 0-17 mph (0-28.3 km/hr.) |
| Reverse | 0-8.5 mph (0-14.2 km/hr.) | 0-8.5 mph (0-14.2 km/hr.) |
| Travel Speeds with optional 29 x 10.5-15 tires | | |
| Low range | 0-9 mph (0-15 km/hr.) | 0-9 mph (0-15 km/hr.) |
| High range | 0-18 mph (0-30 km/hr.) | 0-18 mph (0-30 km/hr.) |
| Reverse | 0-9 mph (0-15 km/hr.) | 0-9 mph (0-15 km/hr.) |
| DIMENSIONAL SPECIFICATIONS | | |
| Cab Height | 81 in. (2057 mm) | 81 in. (2057 mm) |
| Cab Height with optional 29 x 10.5-15 tires | 82 in. (2083 mm) | 82 in. (2083 mm) |
| Overall Length | 181.6 in. (4616 mm) | 180.8 in. (4592 mm) |
| Overall Width | 60 in. (1525 mm) | 60 in. (1525 mm) |
| Ground Clearance | 9.25 in. (235 mm) | 9.25 in. (235 mm) |
| Ground Clearance with optional 29 x 10.5-15 tires | 10.25 in. (260 mm) | 10.25 in. (260 mm) |
| Operating Weight with bucket | 5490 lb. (2485 kg) | 5640 lb. (2558 kg) |
| Outside Turning Diameter (AWS) | 17.5 ft. (5337 mm) | 17.5 ft. (5337 mm) |
| Lift Height | 83.3 in. (2117 mm) | 83.3 in. (2117 mm) |
| Lift Height with optional 29 x 10.5-15 tires | 84.3 in. (2143 mm) | 84.3 in. (2143 mm) |
| ENGINE | | |
| Horsepower - Net | 59 hp | 59 hp |
| Engine Type | Diesel | Diesel |
| Fuel Tank Capacity | 20 gal (76.1 L) | 20 gal (76.1 L) |
| Machine Shutdown Protection Feature | Std | Std |
| Battery Run-down Protection | Std | Std |
| Bobcat SmartFan | Std | Std |
| Horsepower Management | Std | Std |
| MACHINE FEATURES | | |
| COMFORT FEATURES | | |
| Cab with Heat and Air Conditioning | Opt | Opt |
| Cruise Control | Std | Std |
| Radio/CD Player | Opt | Opt |
| Driver's Side Suspension Seat | Opt | Opt |
| Floorboard Riser Kit | Opt | Opt |
| Step Kit | Opt | Opt |
| Front Work Lights | Std | Std |
| Rear Work Lights | Opt | Opt |
| Road Light Kit | Opt | Opt |
| PERFORMANCE FEATURES | | |
| Four-Wheel Drive | Std | Std |
| Four-Wheel Independent Suspension | Std | Std |
| Limited Slip Differentials | Std | Std |
| Two-Speed Transmission | Std | Std |
| Hydraulic Dump Cargo Box | Std | – |
| Rear Window Guard | Opt | Opt |
| 2 in. Rear Receiver Hitch | Std | Std |
| PTO | – | Opt |
| 3 pt. Hitch | – | Opt |
| Rear Remote Hydraulics | Opt | Opt |
| MACHINE SAFETY FEATURES | | |
| ROPS/FOPS Approved Cab Structure | Std | Std |
| Toolcat Interlock Control System (TICS™) | Std | Std |
| Back-up Alarm and Horn | Opt | Opt |
| Keyless Start System | Opt | Opt |
| FEATURES FOR ATTACHMENTS | | |
| Bob-Tach™ Mounting System | Std | Std |
| Auxiliary Hydraulics | Std | Std |
| Hydraulic Standard Flow | 18.9 gpm (71.4 L/min.) | 18.9 gpm (71.4 L/min.) |
| Hydraulic High Flow (Optional) | 27.9 gpm (107.4 L/min.) | 27.9 gpm (107.4 L/min.) |
| Hydraulic Pressure | 3000 psi (207 Bar) | 3000 psi (207 Bar) |
| Pressure Release Hydraulic Quick Couplers | Std | Std |
| Fingertip Auxiliary Control | Std | Std |
| Attachment Control Kit | Opt | Opt |
| Lift Arm Float Functionality | Std | Std |
| Dual Direction Detent | Std | Std |
| Work Mode | Std | Std |

* 1,500-pound ROC if machine is equipped with 3-point PTO.



The Toolcat 5600 offers over 6 ½ feet of lift height for loading or placing materials.



The Toolcat™ 5610 3-point hitch can utilize Bobcat implements – plus all of your Category 1, 3-point hitch implements from other manufacturers.



Compact and agile, the Toolcat™ utility work machines achieve a tighter turning radius than most ATVs. All-wheel steer allows you to maneuver in tight spaces without having to back up and reposition. Turn around trees, through tight corners, and get in and out of small barns and buildings.



Train operators and technicians in the safe operation and servicing of Bobcat equipment.

Operator training courses, safety videos and other training materials are available at your Bobcat dealer's parts department or online at www.bobcat.com/training or www.training.bobcat.com

WORK IS SIMPLY JUSTIFICATION.

If a utility vehicle is better suited for your job, check out the revolutionary lineup from Bobcat.
www.bobcat.com/4x4



The leader in versatility and maneuverability.



Attachments



Skid-Steer Loaders



Compact Track Loaders



All-Wheel Steer Loader



Compact Excavators



Mini Track Loaders



VersaHandler® Telescopic Tool Carriers



Toolcat™ Utility Work Machines



Utility Vehicles



Compact Tractors



Get Bobcat Gear!

Find cool Bobcat® gear and accessories by visiting your local Bobcat dealer or www.BobcatStore.com

Bobcat History

Pioneering Maneuverability:

Bobcat introduced its first compact loader in 1958 and two years later, the world's first skid-steer loader. This created an entire industry of machines that put the power of large equipment in a compact size with unmatched maneuverability.



Offering More Versatility:

In 1970 Bobcat invented the first quick-change attachment system for skid-steer loaders called the Bob-Tach™ mounting system. Today we offer more attachments than anyone in the world empowering customers to transform all our machines into multi-task attachment carriers and reach higher levels of production.

One Tough Animal:

All over the world, Bobcat equipment is known for being durable and dependable. By lasting longer and minimizing down time we help our customers become as successful as possible.

Help When You Need It:

With 50 years of experience and over 550 locations we offer the best dealer network in the country for compact equipment. They offer a quality sales force, dependable parts department and qualified service technicians leading to a quality customer experience.



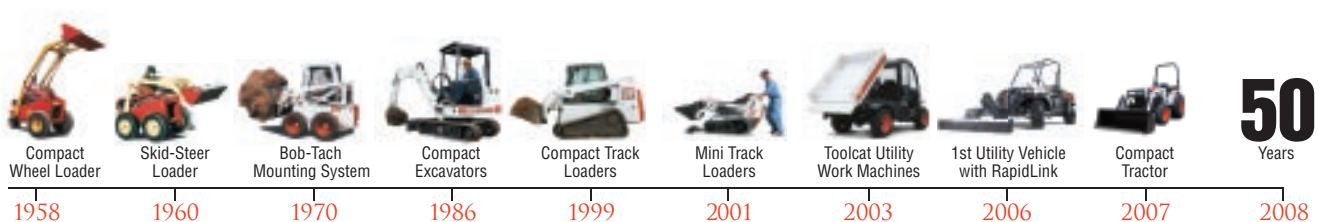
Leader by Design:

Listening to the customer and a pioneering spirit is why Bobcat continues to lead the evolution of compact equipment...

- 1960** – Invented the **FIRST** true skid-steer loader.
- Today** – One out of every two skid-steers is a Bobcat loader.
- 1970** – Invented the **FIRST** attachment mounting system for skid-steer loaders.
- Today** – Bobcat Company manufactures more attachments than anyone in the world.
- 1977** – Built the **FIRST** skid-steer with no chain adjustments required.
- Today** – Still a Bobcat exclusive.
- 1981** – The **FIRST** secondary restraint seat bar is introduced.
- Today** – Bobcat is the only company that offers operator training kits for compact equipment.
- 1983** – The **FIRST** skid-steer with a transversely mounted engine.
- Today** – Still a Bobcat exclusive.
- 1990** – Introduced the **FIRST** compact excavator manufactured in the U.S.
- Today** – Still the only compact excavator manufactured in the U.S.
- 1999** – Introduced the **FIRST** compact track loader with a solid-mounted undercarriage manufactured in the U.S.
- Today** – One out of every two compact track machines is a Bobcat.
- 2001** – Invented the **FIRST** loader with all-wheel steer and skid-steer capabilities.
- Today** – Still a Bobcat exclusive.
- 2003** – Revolutionized the way the world works with the invention of the Toolcat line, the world's **FIRST** utility work machines – a cross between a pickup, attachment carrier and utility vehicle.
- Today** – The Toolcat utility work machine– still the only one of its kind.
- 2006** – **FIRST** utility vehicle with RapidLink™ Attachment System.
- 2007** – Bobcat launches its new line of compact tractors.
- 2008** – Roller Suspension, the **FIRST** all-steel suspension system, is introduced.

A Constant Innovator:

In the late 1950s, a turkey farmer needed help—so in 1958 we introduced what was to become the world's first skid-steer loader. We created an industry by listening to the needs of the customer. This focus is the same today. In 2000, a superintendent needed help—so we built the world's first Toolcat utility work machine. We continue to be a global leader in innovation by listening to our customers.



BOBCAT TIMELINE

A BRAND NEW WAY TO COVER YOUR BACKSIDE



Select a Bob-Tach™-mounted bucket or attachment up front, pair it with an implement in back, and there's no stopping you. Finish one job. Then look behind you and do the next one. The new Toolcat™ 5610 can carry complementary attachments and implements for incredible efficiency, and with the right combination you can even do two tasks at once.



Bobcat®

www.bobcat.com/5610tc

One Tough Animal™