



TL360 | Telescopic Handlers



Performance

Lifting height	6010.0 mm
Rated capacity	3000 kg
Capacity (at max. height)	3000 kg
Capacity (at max. reach)	1300 kg
Max. reach	3365.0 mm
Crowding force	5700 daN

Weights

Weight (unladen)	6110 kg
------------------	---------

Traction

Standard tyres	Standard 405/70x20
1st gear / low range (40 km/h option)	6 (6) km/h
1st gear / high range (40 km/h option)	11 (12) km/h
2nd gear / low range (40 km/h option)	16 (18) km/h
2nd gear / high range (40 km/h option)	30 (40) km/h

Drive System

Main drive	Hydrostatic motor with 2 speed gearbox
Transmission	Hydrostatic with electronic regulation

Engine

Make / Model	PERKINS / 1104D-44TA
Fuel	Diesel
Cooling	Liquid
Rated power (DIN 6271) at 2200 RPM	74.5 kW
Maximum torque at 1400 RPM	410.0 Nm
Number of cylinders	4
Displacement	4.40 L

Hydraulic System

Pump type	Gear pump with LS valve
Combined pump capacity	100.00 L/min

Cycle Times

Lift time - no load	6.9 s
Lower time - no load	5.0 s
Telescope in time at max. reach - no load	5.3 s
Telescope in time at max. height - no load	5.3 s
Telescope out time at max. reach - no load	5.4 s
Telescope out time at max. height - no load	5.4 s

Brakes

Engine braking	Hydrostatic
Parking and emergency brake	Negative brake with hydraulic command

Fluid Capacities

Axles and reduction gears front / rear	9.1/9.1 L
Engine oil	8.50 L
Fuel tank	138.00 L
Hydraulic reservoir	59.00 L

Standard Features

Aggravating Movements Arrester (AMA)	Two way hydraulic supply at the end of the boom
Hydrostatic transmission	Mudguards
ROPS/FOPS operator cab	Turbo-charged engine
Heating, demisting and ventilation	Narrow hook-up for mounting of the equipment
Front and rear washer/wipers	Mechanical lock of the equipment
Suspension seat	Joystick with forward/reverse control
Road lights	Transmission lock override
Turn signals	Work lights on top of the cab
Right and left side mirrors	Standard 405/70x20 tyres

Options

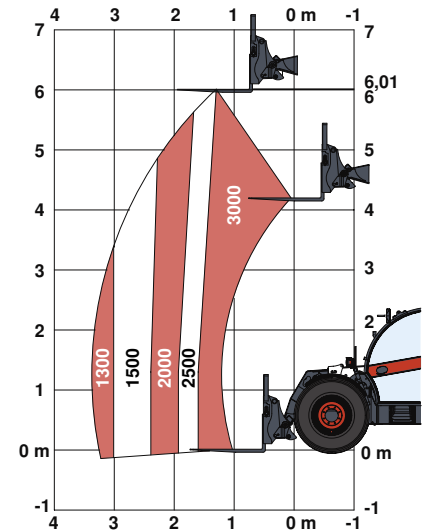
Air conditioning	Lockable fuel cap
Auxiliary line on boom with ACD and electric connectors	Manitou carriage with hydraulic attachment lock
Back-up alarm	Manually adjustable drawbar coupler tow hitch
Basic tow hitch	No forward/reverse control on joystick
Blue lights for henhouses	Pintle tow hitch
Boom light	Proportional engine fan with inverter
Boom stop	Protective grill for windshield
Boom suspension	Quicktach carriage with hydraulic attachment lock
Catalytic purifier muffler	Rear auxiliary line
Cold start	Rear auxiliary line with hydraulically adjustable tow hook
Custom colour	Rear electric auxiliary
Cyclonic air prefilter	Safety hammer
Double right rear view mirror	Sears air suspension seat
Drawbar coupler tow hitch	Support for vehicle registration plate with rear hydraulic hitch
Fire extinguisher	Support for vehicle registration plate without rear hydraulic hitch
Front tow hitch	Tool box
Grammer air suspension seat	Transmission 40 km/h
Hydraulically adjustable tow hook	Wheel wedge

Environmental

Level of acoustic power (LWA)	106 dB(A)
-------------------------------	-----------

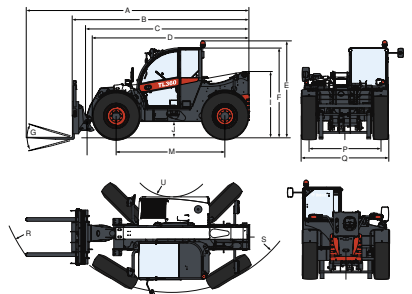
Load Charts

With forks and standard 405/70x20 tyres



Complies with stability test EN1459 Annex B

Dimensions



(-) 900.0 mm	(L) 1156.0 mm
(A) 5874.0 mm	(M) 2870.0 mm
(B) 4669.0 mm	(N) 643.0 mm
(C) 4563.0 mm	(O) 1013.0 mm
(D) 4145.0 mm	(P) 1895.0 mm
(E) 2561.0 mm	(Q) 2300.0 mm
(F) 2374.0 mm	(R) 4852.0 mm
(G) 135°	(S) 3714.0 mm
(I) 1752.0 mm	(U) 1092.0 mm
(J) 430.0 mm	

Specifications and design are subject to change without notice. Pictures of Bobcat products may show other than standard equipment.



www.bobcat.eu